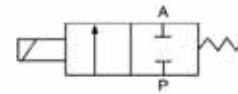


UF Series Solenoid Valve

Stainless Steel 304S Body, Two Way Normally Closed



	UF	-	08	F	AC220V	D
Specification Code						
UF : Two position two way solenoid valve (direct drive type)						
Joint Pipe Bore						
06 : 1/8"						
08 : 1/4"						
10 : 3/8"						
Initial Estate						
Blank : Pipe joint type						
F : Flange type						
Standard Voltage						
DC12V						
DC24V						
AC24V 50/60Hz						
AC110V 50/60Hz						
AC220V 50/60Hz						
Wiring Form						
Blank : Lead wire type						
D : Join connector						
E : Blast-proof coil						
G : Water-proof coil						

UF Series Solenoid Valve Stainless Steel 304S Body, Two Way Normally Closed

Specification			
Model	UF-06	UF-08	UF-10
Working Medium	Air, Water, Oil, Gas		
Motion Pattern	Direct Drive Type		
Type	Normal Close Type		
Aperture of Flow Rate (mm)	2.5		5
CV Value	0.23		0.60
Joint Pipe Bore	1/8"	1/4"	3/8"
Operation Fluid Viscosity	20 CST (below)		
Working Pressure (kgf/cm ²)	0 ~ 7		
Max. Pressure Resistance (kgf/cm ²)	10		
Operating Temperature Range (°C)	-50 ~ 80		
Voltage Range	± 10%		
Material of Body	Stainless steel 304S		
Material of Oil Seal	NBR, EPDM VITON		